

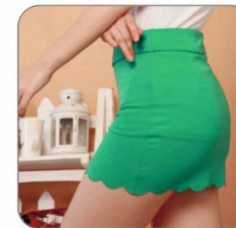
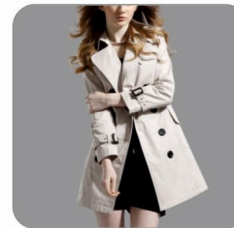
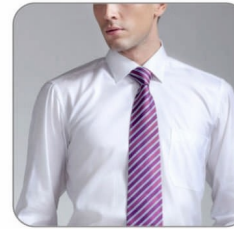
OS 900 B 1300-700 DSH

Cnc Machine Intelligent Template



APPLICATION SCOPE OF TEMPLATE SEWING SYSTEM

Shirt, sport wear, jeans, occupational dress, fashionable dress, cotton, down jacket, children's clothing, shoes, hats, bags, mattresses, car seats and other sewn fabric.



VALUE OF APPLYING TEMPLATE MACHINE

- 1.The Automatic Template machine sewing area 1300 X 700mm
- 2.Applying one automatic template machine can replace many sets of lockstitch, embroidery, tacking machines, that is to reduce the labour cost addressing the problem of short of labors.
- 3.Applying automatic template machine can effectively plan and control production processes, shorten production cycle, reduce operation cost.
- 4.Template technology has improved the traditional processing mode of garment enterprises. Through designing template, setting up template process, laying out a standard operation process which is simple and easy to implement, make the production of finished product standardized and unified.
- 5.It was proved, the application of template machines, effectively improved the overall production efficiency of about 40%, help garment enterprises to healthily develop.
- 6.To solve the problem of employment. After application of template machine, even those who never make cloth before, after a simple training can make high quality clothing. To solve the problem of the difficulty for garment enterprises to employ skilled workers for long time.
- 7.Template application is very flexible, can optimize or merge some parts of working processes, reduce unnecessary rework and defective products, significantly enhance the sewing process, promote product quality, assure more stable quality, more smooth production line.

REGISTERED OFFICE

MEHALA MACHINES INDIA LTD

36, Harvey Road, Tirupur-641602(India) Phone: 91-421-2203180,2203580 & 2203880 Mail: mehala@mehala.com

Web: www.mehala.com

INLAND BRANCHES

Bangalore

☎ 080-25631765 / 66
☎ 9341721269

✉ bangalore@mehala.in

Chennai

☎ 044-28253191/92
☎ 9361866880

✉ chennai@mehala.in

Delhi

☎ 011-43800100, 01, 02
☎ 9313099751

✉ delhi@mehala.in

Hyderabad

☎ 040-40128662, 32982615
☎ 9393233880

✉ hyderabad@mehala.in

Kanpur

☎ 0512-3267539
☎ 9335423880

✉ kanpur@mehala.in

Karur

☎ 04324-325117
☎ 9362140055

✉ karur@mehala.in

Kochi

☎ 0484-31 13080
☎ 9388989880

✉ cochin@mehala.in

Kolkata

☎ 033-25905093 / 32578018
☎ 9830117825

✉ kolkata@mehala.in

Ludhiana

☎ 0161-3256836 / 4656880
☎ 9356443885

✉ ludhiana@mehala.in

Mumbai

☎ 022-24909236 / 24903074
☎ 9371364880

✉ mumbai@mehala.in

Madurai

☎ 0452-3254923
☎ 9362151880

✉ madurai@mehala.in

Tirupur North

☎ 0421-4306222, 2203580
☎ 0421-4323180, 2215665

✉ tirupurnorth@mehala.in

Tirupur South

☎ 0421-4323180, 2215665
☎ 093518 03060

✉ tirupursouth@mehala.in

Udaipur(C&F)

☎ 093518 03060

✉ jaipur@mehala.in