



Ascend to Greatness

C007LX

C007L SERIES

C007L

Ultra High Speed Cylinder Bed
Interlock Stitch Machine

C007LX

Semi-Dry Ultra High Speed Cylinder
Bed Interlock Stitch Machine

C007L/LX SERIES

FEATURES



Flagship model with SiRUBA's state-of-the-art innovation.



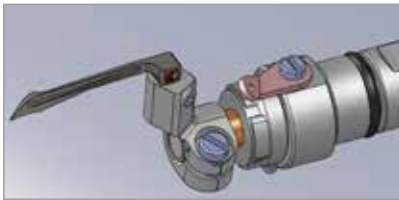
The Recessed Machine Bed

With the recessed machine bed, sewing material comes closer to the needle hole, thus provides more precise, easier, and smoother sewing.



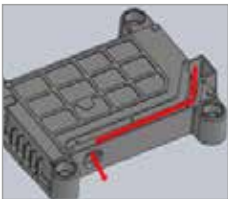
Recessed Cylinder Bed

The recessed cylinder bed on the front cover is shortened. The short cylinder has superior operating performance, which can be applied to the extensive covering seam. Hemming or wrapping can be sewed just by increasing the extended cover.



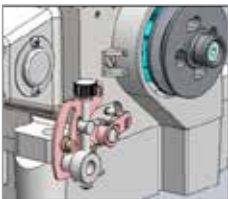
New Oil Sealing Technology

New oil sealing structure used on needle bar and looper mechanism can efficiently avoid oil splash. New wear-resistant material also enhances performance and durability.



New Cool Down Technology

Frame structure renewed with better cooling mechanism. Vibration is also reduced to contribute better sewing experience.



Easy-to-adjust Differential Feed Dog Design

The differential feed dog adjuster is placed at right side of the operator. Adjust it easily without hesitation.



Brand New Design Upper Thread Gripper

The newly designed upper thread gripper provides fast, precise movement and stable thread gripper.



Dual Thread Take-up Mechanism

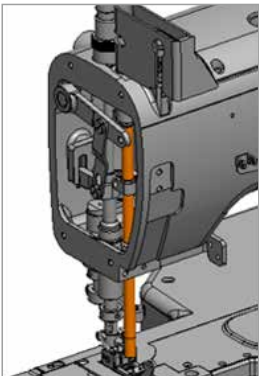
The brand new design of dual thread take-up lever thread tension combination is ideal for both heavy and light fabric. Sewing applicable range is wider and the applicability is higher.

- 中厚布料 (Medium heavy fabric)
- 薄布料 (Light fabric)

C007LX series

Oilless is trouble-free.

C007LX provides you all new sewing experience.



Needle bar mechanism re-designed with new surface treatment, no oil stains and oil splash during operating, greatly increase sewing quality. Needle bar also has better durability due to new lubrication mechanism.

C007L/C007LX										
General Seaming/ Bottom Hemming	C007L-W125-2□□/CH	2	4	3.2/ 4.0/ 4.8	1.4-3.6	0.9~1.4	5/7	UYX128GAS#10	6000	
	C007L-W125-3□□/CH	3	5	4.8/ 5.6/ 6.4	1.4-3.6	0.9~1.4	5/7	UYX128GAS#10	6000	
	C007L-U125-2□□/CH	2	3	3.2/ 4.0/ 4.8	1.4-3.6	0.9~1.4	5/7	UYX128GAS#10	6000	
	C007L-U125-3□□/CH	3	4	4.8/ 5.6/ 6.4	1.4-3.6	0.9~1.4	5/7	UYX128GAS#10	6000	
	C007L-W165-2□□/CH	2	4	4.0/ 4.8	1.4-3.6	0.9~1.4	5/7	UYX128GAS#10	6000	
	C007L-W165-3□□/CH	3	5	4.0/ 4.8	1.4-3.6	0.9~1.4	5/7	UYX128GAS#10	6000	
Optional Device: UTP, UTQ, UTR, UTS, CLA, CMR, CAR/UTP, CAR/UTQ										
Overlock-seam Covering Stitch	C007L-W325-3□□/CC	3	5	5.6/ 6.4	1.4-3.6	0.9~1.4	5/7	UYX128GAS#10	6000	
	C007L-U325-3□□/CC	3	4	5.6/ 6.4	1.4-3.6	0.9~1.4	5/7	UYX128GAS#10	6000	
	C007L-W325-3□□/CE	3	5	5.6/ 6.4	1.4-3.6	0.9~1.4	5/7	UYX128GAS#10	6000	
	C007L-U325-3□□/CE	3	4	5.6/ 6.4	1.4-3.6	0.9~1.4	5/7	UYX128GAS#10	6000	
Optional Device: UTP, UTQ, UTR, UTS, CLA, CMR, CAR/UTP, CAR/UTQ										
Tubular Jacquard Elastic Waistband Attaching	C007L-W535-232/CR/UTP/CL/RLP/CX	2	4	3.2	1.4-3.6	0.9~1.4	5/7	UYX128GAS#10	5000	
	C007L-W535-3□□/CR/UTP/CL/RLP/CX	3	5	5.6/ 6.4	1.4-3.6	0.9~1.4	5/7	UYX128GAS#10	5000	
	C007L-U535-232/CR/UTP/CL/RLP/CX	2	3	3.2	1.4-3.6	0.9~1.4	5/7	UYX128GAS#10	5000	
	C007L-U535-3□□/CR/UTP/CL/RLP/CX	3	4	5.6/ 6.4	1.4-3.6	0.9~1.4	5/7	UYX128GAS#10	5000	
Bottom Hemming with Left Side Fabric Trimmer	C007L-W815-2□□/CRL/RL	2	4	4.0/ 4.8	1.4-3.6	0.9~1.4	5/7	UYX128GAS#10	5000	
	C007L-W815-3□□/CRL/RL	3	5	5.6/ 6.4	1.4-3.6	0.9~1.4	5/7	UYX128GAS#10	5000	
	C007L-U815-2□□/CRL/RL	2	3	4.0/ 4.8	1.4-3.6	0.9~1.4	5/7	UYX128GAS#10	5000	
	C007L-U815-3□□/CRL/RL	3	4	5.6/ 6.4	1.4-3.6	0.9~1.4	5/7	UYX128GAS#10	5000	
	C007L-W815A-2□□/CRL/RL	2	4	4.0/ 4.8	1.4-3.6	0.9~1.4	5/7	UYX128GAS#10	5000	
	C007L-W815A-3□□/CRL/RL	3	5	5.6/ 6.4	1.4-3.6	0.9~1.4	5/7	UYX128GAS#10	5000	
	C007L-U815A-2□□/CRL/RL	2	3	4.0/ 4.8	1.4-3.6	0.9~1.4	5/7	UYX128GAS#10	5000	
	C007L-U815A-3□□/CRL/RL	3	4	5.6/ 6.4	1.4-3.6	0.9~1.4	5/7	UYX128GAS#10	5000	
Optional Device: UTP, UTQ, UTR, CMR, CAR/UTP, CAR/UTQ										
鬆緊帶上帶邊縫 附左切刀 Elastic Attaching with Left Fabric Trimmer	C007L-W825-2□□/CRL/CL/RL	2	4	4.0/ 4.8	1.4-3.6	0.9~1.4	5/7	UYX128GAS#10	5000	
	C007L-W825-3□□/CRL/CL/RL	3	5	5.6/ 6.4	1.4-3.6	0.9~1.4	5/7	UYX128GAS#10	5000	
	C007L-U825-2□□/CRL/CL/RL	2	3	4.0/ 4.8	1.4-3.6	0.9~1.4	5/7	UYX128GAS#10	5000	
	C007L-U825-3□□/CRL/CL/RL	3	4	5.6/ 6.4	1.4-3.6	0.9~1.4	5/7	UYX128GAS#10	5000	
	C007L-W825A-2□□/CRL/CL/RL	2	4	4.0/ 4.8	1.4-3.6	0.9~1.4	5/7	UYX128GAS#10	5000	
	C007L-W825A-3□□/CRL/CL/RL	3	5	5.6/ 6.4	1.4-3.6	0.9~1.4	5/7	UYX128GAS#10	5000	
: UTP, UTQ, CMR, CAR/UTQ Optional Device: UTP, UTQ, CMR, CAR/UTQ										

W8□□ 4 rows



W8□□A 5 rows



Needle Plates for CRL